

November 2001

Technical Data Sheet for Indium Trichloride anhydrous

Nomenclature: Indium(III)Chloride, Indium Trichloride, Anhydrous Indium Trichloride

Formula: InCl₃ M.W. 211.18

CAS Number: 10025-82-8

Appearance White fluffy crystalline powder

Chemical Data

Typical values

made with 99.99%
min.purity indium

made with 99.999%
min.purity indium

Morphology Polycrystalline

Crystalline Density

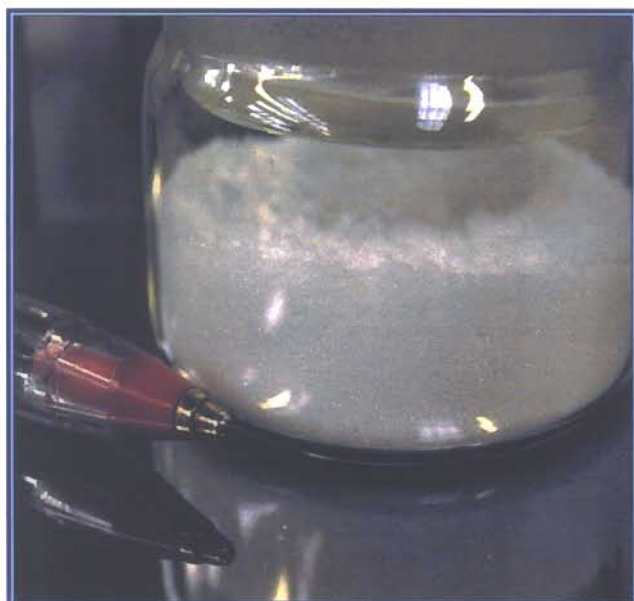
InCl₃ ≡ 3.46gcm⁻³

Bulk density of solid ≡ 0.5gcm⁻³

Melting point 586°C

Boiling point volatilises >600°C

	made with 99.99% min.purity indium	made with 99.999% min.purity indium
Water	<0.05%	<0.05%
Ag	<1ppm	<1ppm
Al	1ppm	<1ppm
Cd	1ppm	<1ppm
Cr	<1ppm	<1ppm
Cu	2ppm	<1ppm
Fe	1ppm	<1ppm
Ge	<2ppm	<1ppm
Ga	2ppm	<1ppm
Mg	1ppm	<1ppm
Mo	<1ppm	<1ppm
Na	5ppm	<5ppm
Ni	<1ppm	<1ppm
Pb	1ppm	<1ppm
Si	<5ppm	<5ppm
Sn	8ppm	<5ppm
Zn	4ppm	<3ppm



*This close up photograph just reveals
the crystalline structure {monoclinic} of
anhydrous indium trichloride*

% metal in compound w/w

as indium ≡ 51.9% theoretical value

Solubility

Water - very soluble
Benzene - soluble

Packaging/Containers

Glass wide neck bottles - long shelf life
HD polythene bottles - anhydrous degradation >3mths